

# Dulles South Alliance

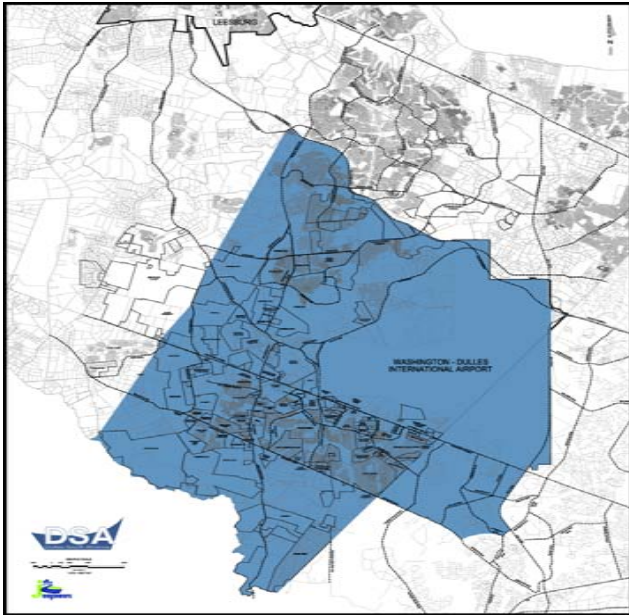
**GET INVOLVED IN THE FUTURE OF BUSINESS AND COMMUNITY IN SOUTHEAST LOUDOUN AND WESTERN FAIRFAX!**



The Dulles South Alliance is dedicated to the future growth of the 50/606 corridor of Loudoun County and bordering Fairfax County. Specific areas of focus are:

- Improving the business climate along Route 50 & Route 606.
- Supporting the enhancement of infrastructure to facilitate business and community growth.
- Promoting awareness among member groups of upcoming legislation with the potential to impact their interests.
- Advancing the interests of DSA members in the future growth of this region.

**Membership opportunities are available to all businesses, community service providers, community groups and individuals**  
**DSA Geographical Coverage**



**The DSA meets quarterly at the Dulles South Multipurpose Center in South Riding. Please check the website for current meeting schedule.**

**Time:**

8:00 a.m. — 10:00 a.m.

**Location:**

Dulles South Multipurpose Center  
 Multipurpose Room 3  
 24950 Riding Center Dr.  
 South Riding, VA 20152

[www.dsava.org](http://www.dsava.org)

**To learn more, contact:**

**Kelly Gray**  
 DSA Administrator  
 (571) 335-2809  
 kelly.gray@dsava.org

**Please mail this form and your check to:**

**DSA**  
 25050 Riding Plaza Ste. 130 #181  
 South Riding, VA 20152

**Board of Directors**

Scott Plein, Equinox Investments (President)	Ed Williams, Williams Realty Advisors
Ed Hoy, Chantilly Crushed Stone (VP)	Roy Barnett, Van Metre Companies
Bill Dean, M.C. Dean, Inc.	John DeBell, Burgess & Niple
Bob Buchanan, Buchanan Partners	Tracey White, HCA
Dave Gunter, Commercial Group Realty	Jeff Salmon, South Riding Proprietary
Thomas McKay, BR/MC Development Group, LLC	

**Yes, I would like to have a voice in the future of Southeast Loudoun and Western Fairfax**

---

**Company Name:** \_\_\_\_\_

**Member Name and Title:** \_\_\_\_\_

**Address:** \_\_\_\_\_

**Phone:** \_\_\_\_\_

**E-mail:** \_\_\_\_\_

**Type of Business:** \_\_\_\_\_

**Dues Enclosed:** \$ \_\_\_\_\_

**County-Loudoun or Fairfax:** \_\_\_\_\_

Annual Fee	Membership Criteria
\$1000	- Businesses with more than 75 employees - Landholding companies with over 30 acres
\$500	- Businesses with 25-75 employees
\$250	- Individuals holding less than 30 acres
\$100	- Non-profit & Not for Profit Organizations - Businesses not affiliated with Real Estate with less than 25 employees - Individuals not affiliated with Real Estate

