

Dulles South Alliance

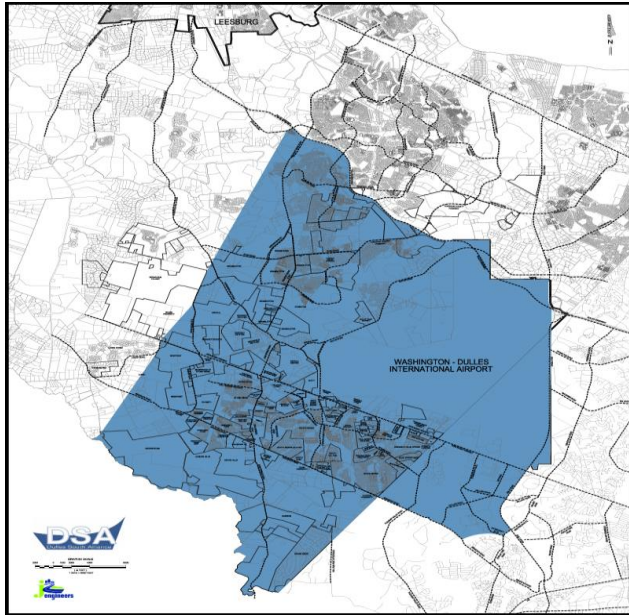
GET INVOLVED IN THE FUTURE OF BUSINESS AND COMMUNITY IN SOUTHEAST LOUDOUN AND WESTERN FAIRFAX!



The Dulles South Alliance is dedicated to the future growth of the 50/606 corridor of Loudoun County and bordering Fairfax County. Specific areas of focus are:

- Improving the business climate along Route 50 & Route 606.
- Supporting the enhancement of infrastructure to facilitate business and community growth.
- Promoting awareness among member groups of upcoming legislation with the potential to impact their interests.
- Advancing the interests of DSA members in the future growth of this region.

Membership opportunities are available to all businesses, community service providers, community groups and individuals
DSA Geographical Coverage



The DSA meets quarterly at the Dulles South Multipurpose Center in South Riding. Please check the website for current meeting schedule.

Time:

8:00 a.m. — 10:00 a.m.

Location:

South Riding Multipurpose Center
 24950 Riding Center Drive
 South Riding, VA 20152

Please check our website for the latest meeting information

www.dsava.org

Board of Directors

Scott Plein, Equinox Investments (President)	Ed Hoy, Chantilly Crushed Stone
(VP) Roy Barnett, Van Metre Companies	Bill Dean, M.C. Dean, Inc.
John DeBell, Burgess & Niple	Bob Buchanan, Buchanan Partners
Tracey White, HCA	Dave Gunter, Commercial Group Realty
Thomas McKay, BR/MC Development Group, LLC	Keith Meurlin, WATF
Jesse Stapleton, Braddock Road HOA	Mike Rhodes, Stone Ridge HOA

To learn more, contact:

Val Walters
 DSA Administrator
 (571) 335-2809
 Val.Walters@dsava.org

Please mail this form and your check to:
DSA
 25050 Riding Plaza Ste. 130 #181
 South Riding, VA 20152

Yes, I would like to have a voice in the future of Southeast Loudoun and Western Fairfax

Company Name: _____
Member Name and Title: _____
Address: _____
Phone: _____
E-mail: _____
Type of Business: _____
Dues Enclosed: \$ _____
County-Loudoun or Fairfax: _____

Annual Fee	Membership Criteria
\$1000	- Businesses with more than 75 employees - Landholding companies with over 30 acres
\$500	- Businesses with 25-75 employees
\$250	- Individuals holding less than 30 acres
\$100	- Non-profit & Not for Profit Organizations - Businesses not affiliated with Real Estate with less than 25 employees - Individuals not affiliated with Real Estate

